

# Quick Start Guide

We highly recommend you follow along with this video tutorial to assemble your eBike. Simply scan the QR code below.



Or visit:

[velotricbike.info/nomad1-2024](https://velotricbike.info/nomad1-2024)

**This guide will get your new eBike set up and ready to ride.**

- **What's in the Box**
- **Assembly and Installation**
- **Tire Pressure Check**
- **Battery & Charging**
- **Features and Test**
- **eBike Diagram**

## What's in the Box



Quick Start Guide

Quick Start Guide



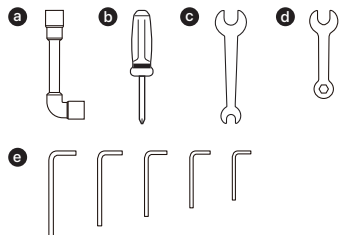
Owner's Manual

Owner's Manual

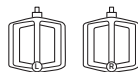


### Tool Bag

- a** Socket Wrench
- b** Phillips Screwdriver
- c** 15mm/8mm Wrench
- d** 10mm Wrench
- e** 6mm/5mm/4mm/3mm/2.5mm Allen Key



## What's in the Box



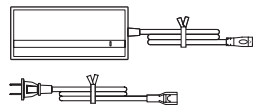
Left / Right Pedal



Front / Rear Reflector



Bell



Adapter & Charging Cable



Display



Front Light



Kickstand



Cap Nut Cover

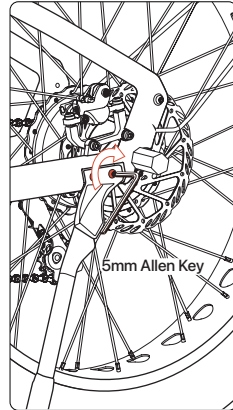
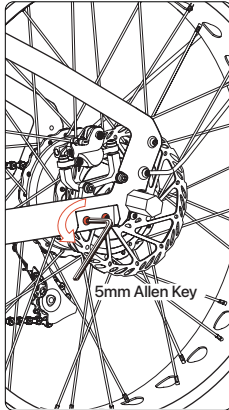
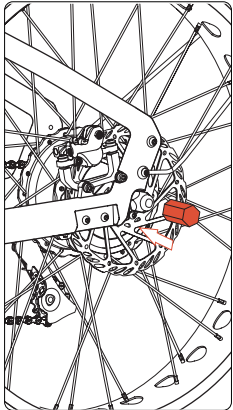


Cable Binder

## Assembly and Installation

Kickstand

1. Put on the cap nut cover.
2. Unscrew the bolts for the kickstand with the 5mm Allen key.
3. Attach the kickstand and tighten the bolts.

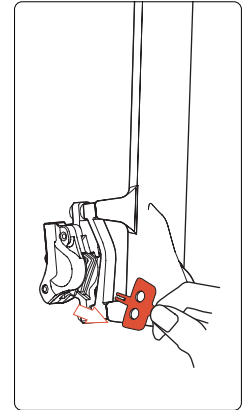
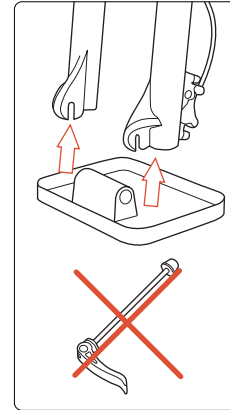
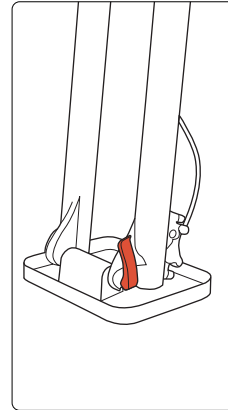


Front Wheel

## Assembly and Installation

1. Open the quick release lever.
2. Unscrew the quick release knob, and remove the quick release from the fork protective tray.
3. Remove the spacer from the brake caliper.

**Note** The quick release is ONLY for this fork protection tray as a protection setup for transportation. You may trash it while unboxing. The quick release is NOT for Front Wheel assembly.

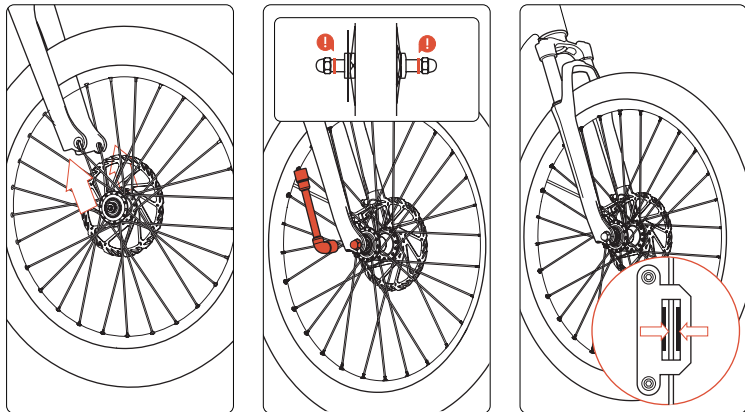


## Assembly and Installation

### Front Wheel

4. Insert the front wheel to the front fork. Seat the hub axle into the dropouts.
5. Tighten and secure the front cap nut with the socket wrench (Torque 30–35 Nm).
6. Ensure the rotor is well-positioned (with gap) inside the brake caliper.

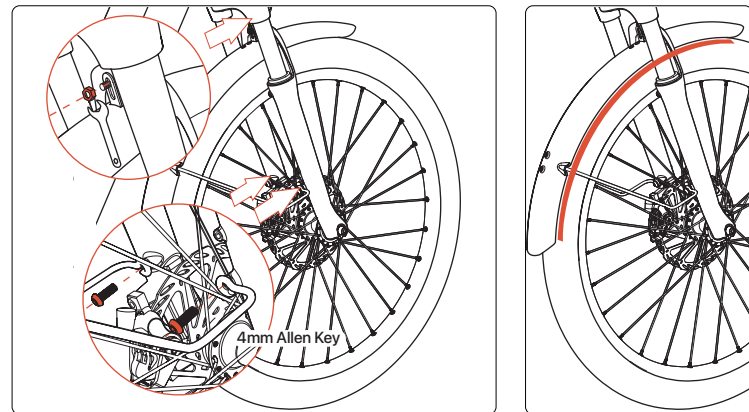
**Note** 1. Torque can be measured by using a torque wrench.  
2. Be careful not to accidentally squeeze the brake levers before this step. Otherwise you may cause misalignment on your hydraulic brakes.



## Assembly and Installation

### Front Fender

1. Unscrew the bolts that affix the front fender to the fork top.
2. Attach the support rods to the fork legs with the 4mm Allen key.
3. Adjust the fender to your own preference. Ensure the wheel is centered and the gap between the fender and the wheel is clear. Fasten the bolts.



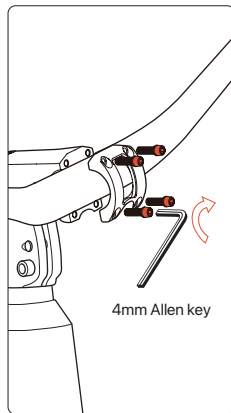
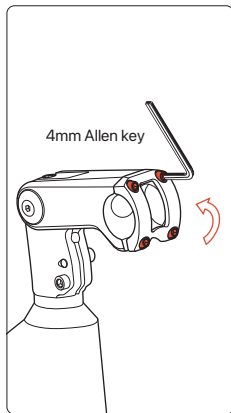
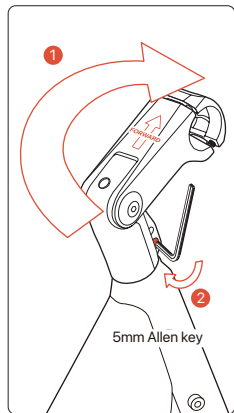
## Assembly and Installation

Handlebar

1. Flip the stem 180° and use a 5mm Allen key to tighten the screws on both side.
2. Use a 4mm Allen key to remove the handlebar stem cap.

3. Insert the handlebar into the stem and pre-lock it (ensure that the handlebar is securely in place without any looseness).

**Note** Please make sure the stem and fork are in the correct direction.



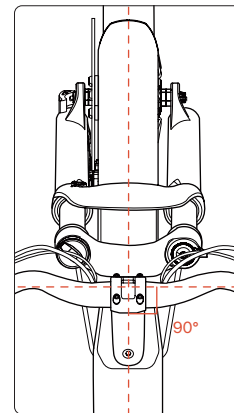
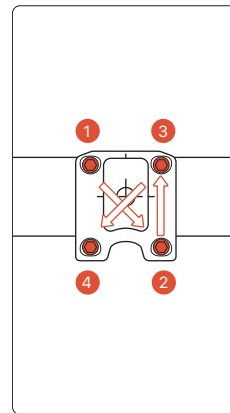
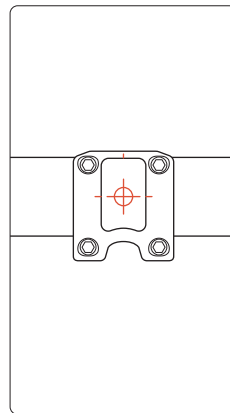
Handlebar

## Assembly and Installation

4. Adjust the handlebar to align with the crosshairs.

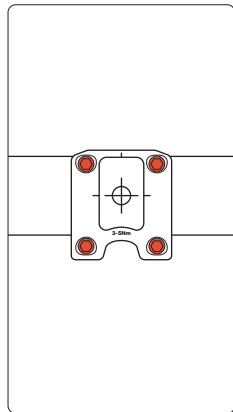
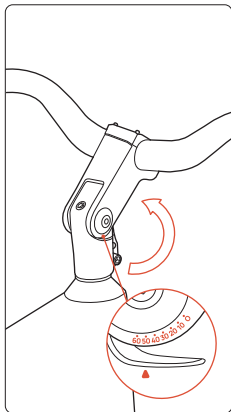
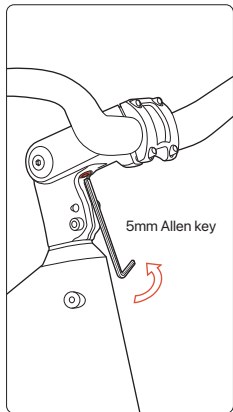
5. Use a 4mm Allen key to tighten the handlebar stem cap in an X-pattern.

6. Adjust the stem to make the handlebar perpendicular to the front wheel.



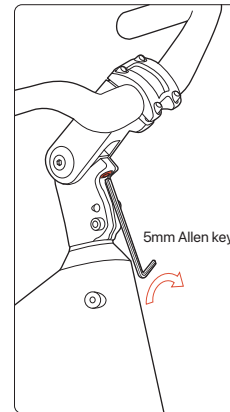
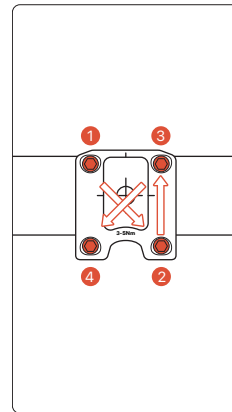
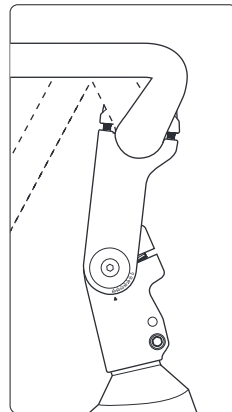
## Assembly and Installation Adjustable Stem and Handlebar Adjustment

1. Use a 5mm Allen key to loosen the locating screw at the bottom of the handlebar stem.
2. Gently lift the handlebar and adjust it to the desired angle. Then tighten it. Torque: 14 Nm.
3. Use a 4mm Allen key to loosen the four screws on the handlebar stem cap.



## Adjustable Stem and Handlebar Adjustment **Assembly and Installation**

4. Adjust the handlebar (ensure the straight section of the handlebar is parallel to the ground).
5. Use a 4mm Allen key to tighten the handlebar stem cap screws in an X-pattern to ensure even spacing above and below the stem cap. Torque range: 6-8 Nm.
6. Use a 5mm Allen key to tighten the screw at the bottom of the handlebar stem.



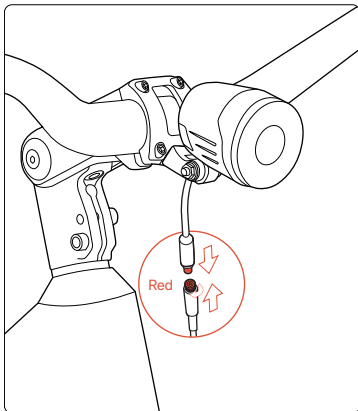
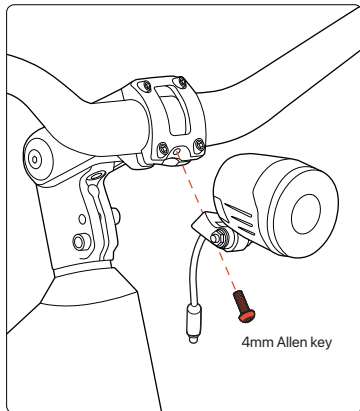


## Assembly and Installation

### Front Light

1. Align the front light bracket with the mounting port on the handlebar stem cap and securely fasten the screw. Torque range: 2.5~5.5 Nm.
2. Align the power cable with the arrow and connect it.
3. Use a screwdriver and an open-end wrench to tighten the nut. Torque range: 2.5~5.5 Nm.

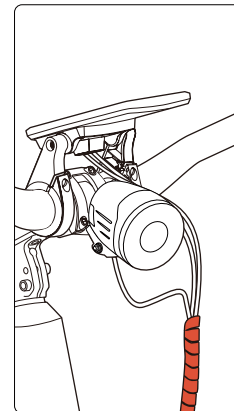
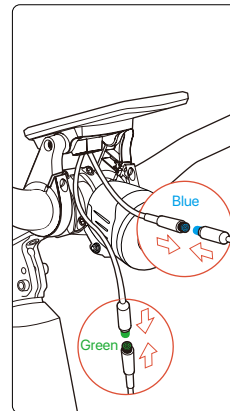
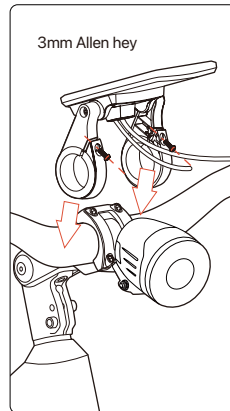
**Note** Before traveling at night, please check the front light to ensure it functions properly.



## Assembly and Installation

### Display

1. Unscrew the bolts on the mounting brackets of the display.
2. Mount the display panel onto the handlebar and adjust it to an angle you can view easily on the seat in a riding position. Tighten the bolts with the 3mm Allen key.
3. Connect the display cables (marked green and blue) as shown below.
4. Wrap the display wires together with the connected front light cable with the cable binder.

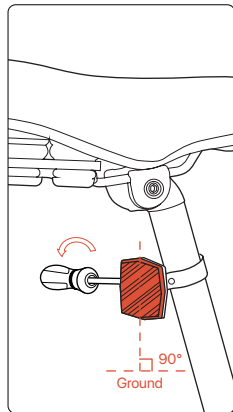
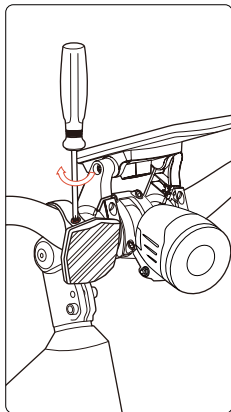
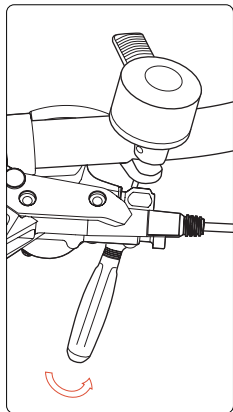


## Assembly and Installation

### Bell and Front/Rear Reflector

1. Unscrew the bolt on the bell mount and install the bell. Adjust the angle before tightening the bolt.
2. Unscrew the bolt on the reflector mount and install the reflector. Adjust the angle before tightening the bolt.
3. Attach the rear reflector to the seat post. Adjust the angle before tightening the bolt.

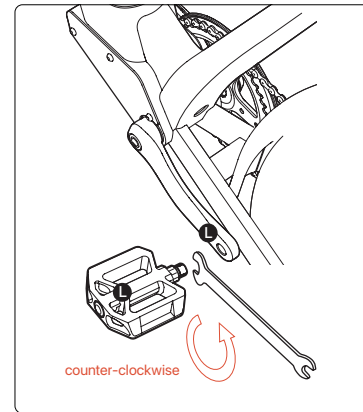
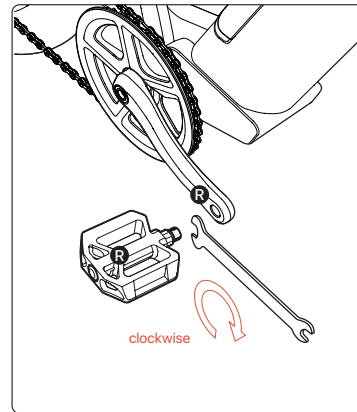
**Note** You can position the bell and reflector according to your preference.



### Pedals

## Assembly and Installation

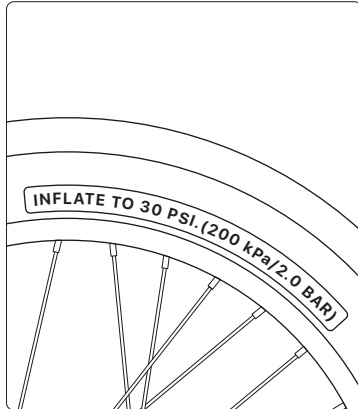
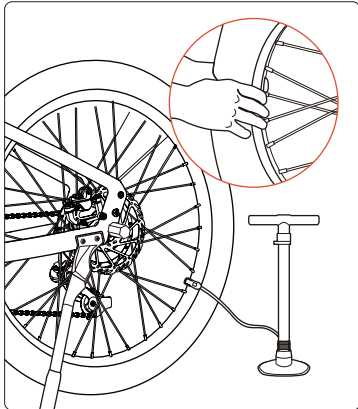
1. Identify each pedal by the sticker on the pedal axle: "L" indicates the left pedal and "R" indicates the right pedal.
2. Install the right pedal. Carefully thread in the right pedal by hand, turning clockwise, as shown in the illustration below.
3. Tighten the right pedal securely with a 15mm wrench.
4. Install the left pedal. Carefully thread in the left pedal by hand, turning counter-clockwise, as shown in the illustration below.
5. Tighten the left pedal securely with a 15mm wrench. Torque range: 35 Nm to 40 Nm



## Tire Pressure Check

1. Check tire pressure by hand, and if it's easily compressible, it indicates low pressure and needs inflation.
2. Use an inflation pump equipped with an AV interface.
3. Inflate the tire until it is no longer easily compressible (do not exceed the tire's maximum recommended pressure).
4. Follow the tire markings for the maximum recommended pressure.

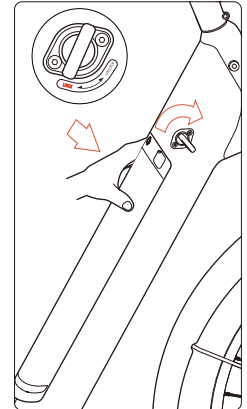
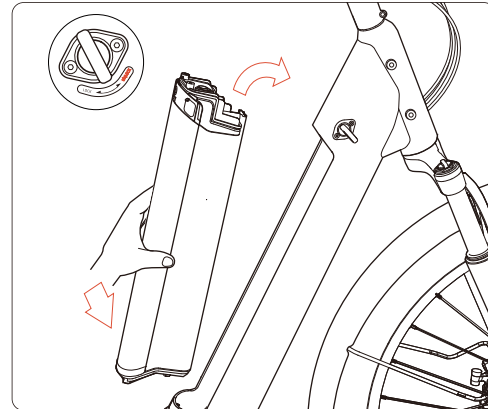
**Note** Check tire pressure before every ride.



## Charge the Battery

## Battery & Charging

1. Fit the battery into the down tube.
2. Insert the key into the battery lock.
3. Press firmly to nest the battery and turn the key clockwise to lock it in place.

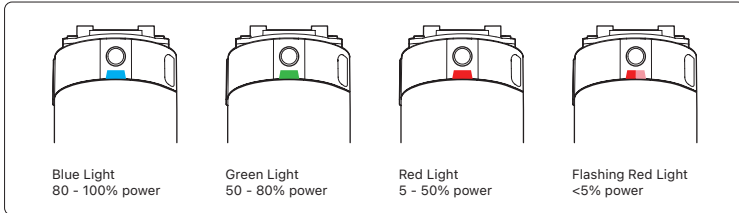
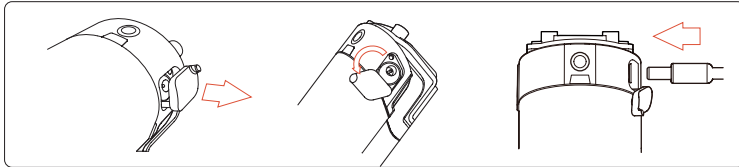


## Battery & Charging

### Charge the Battery

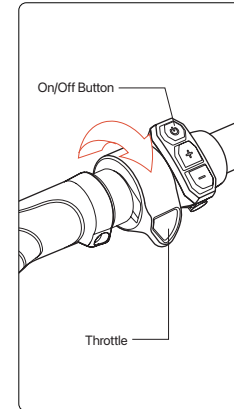
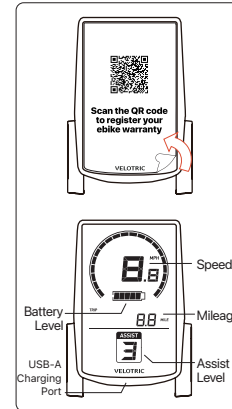
1. The battery can be charged either in or out of the bike. Power off the bike before charging the battery in the bike.
2. Make sure the battery is placed on a flat and clear surface. Plug the DC power cord (barrel connector) into the port.
3. Plug the adapter into the wall. The LED indicator will turn red.
4. The indicator will turn green when the battery is fully charged. Unplug the adapter first before pulling out the cord from the battery.

- ▲ WARNING**
1. Charge the battery in an environment from 50–86°F (10–30°C).
  2. The battery won't charge when it is over 113°F (45°C) or below 32°F (0°C). Let the battery adjust to room temperature for at least 1 hour before trying again.



## Features and Test

1. Peel the protective film off the display screen.
2. Hold the on/off button to power on/off the bike.
3. Our system provides different levels of pedal assistance (1 = lowest, 5 = highest) so you can adapt the power output depending on your riding needs. Level 0 means no pedal assist.

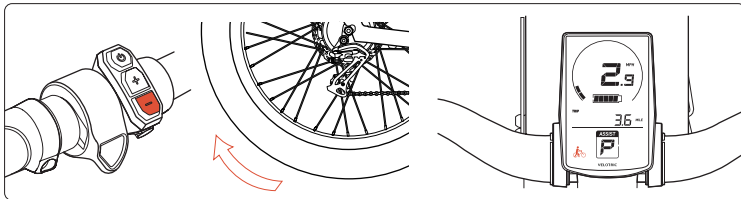
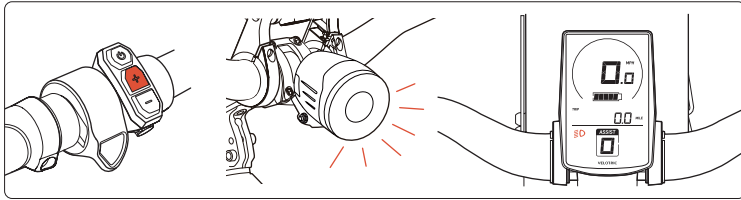


- Assist level 1**  
Eco Mode: Minimal power output for maximum battery efficiency.
- Assist level 2**  
Tour Mode: Low power output for riding long distances.
- Assist level 3**  
Normal Mode: Medium power output for city commuting.
- Assist level 4**  
Sport Mode: Strong power output for active riding.
- Assist level 5**  
Turbo Mode: Maximum power output for extreme riding.

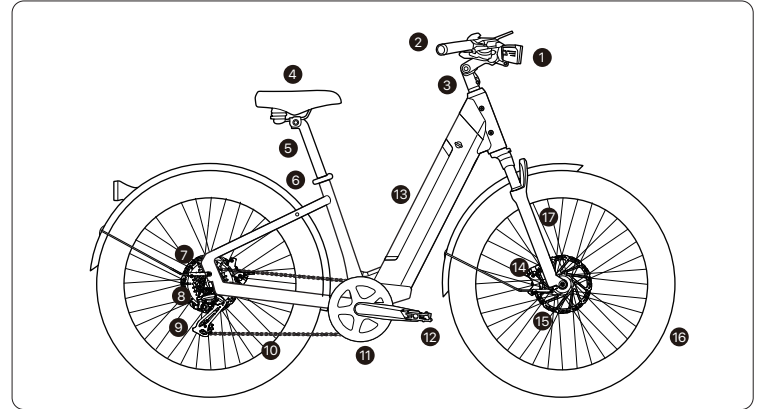
## Features and Test

When the display is on:

1. Hold the "+" button to turn on the **front light**. The display will dim automatically. Hold the "+" again to turn off the light, and the display lights up again.
2. Press "+/-" to shift the **pedal assist level** up or down.
3. Hold the "-" button to turn on Walk Mode at 2.9mph. Release the button to turn off **Walk Mode**.



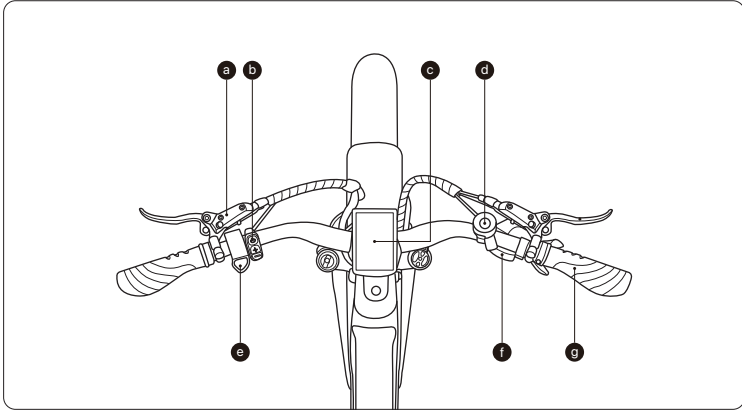
## eBike Diagram



- |                  |                   |                    |
|------------------|-------------------|--------------------|
| 1 Front Light    | 7 Motor           | 13 Battery         |
| 2 Handlebar      | 8 Cassette        | 14 Brake Rotor     |
| 3 Stem           | 9 Rear Derailleur | 15 Brake Caliper   |
| 4 Saddle         | 10 Chain          | 16 Tire            |
| 5 Seatpost       | 11 Crankset       | 17 Suspension Fork |
| 6 Seatpost Clamp | 12 Pedal          |                    |

## eBike Diagram

---



- 
- |                      |                   |
|----------------------|-------------------|
| <b>a</b> Brake Lever | <b>e</b> Throttle |
| <b>b</b> Remote      | <b>f</b> Shifter  |
| <b>c</b> Display     | <b>g</b> Grip     |
| <b>d</b> Bell        |                   |

**BECAUSE  
IT'S FUN.**

# VELOTRIC

## Contact

---

Website: [www.velotricbike.com](http://www.velotricbike.com)

E-mail: [help@velotricbike.com](mailto:help@velotricbike.com)

V1.1